



Die Wärme aus **Tirol**

# Water Conditioner, Pressurisation and degassing

Technical

The sale and supply of any goods by Olymp Werk GmbH shall be subject to our general terms and conditions.




<b>Content:</b>	
Pressurisation Automat HC, Auxiliary vessel .....	2
Accessories .....	3
Technical data .....	4
Membrane Auxiliary vessels .....	5

# Pressurisation Automat

## HC and Auxiliary vessels

RG 65  
net<sup>1</sup>

Pressurisation and degassing automat HC8 for fully automatic expansion, deairation through desorption, pressure maintainance and refilling of the heating water.  
TÜV proofed function and SVGW approved. CE mark of conformity. Double fittings for security. Heat insulating vessel.  
SD card with event log. Top up valve set (except HC E) and impuls water counter (except HC N, E, 50, 100)  
Olymp HC is for all hot water heating or cooling systems according to EN 12828, part 2 and VDI 2035 up to max. 100°C entry temperature.  
All HC up to 1000 are with a red coat.

Standard Pressure Version	Vessel Volume [L]	Working pressure max. [bar]	Pressurisation Automat Order no.
 HC7 N	20	4	HC7N
HC7 ND	20	4	HC7ND
HC 8 E	60	5	HC8SE050
HC 8 E HD	60	9,2	HC8SE050HD
HC 8 50 LP	60	2	HC8S0050LP
HC 8 50	60	4,5	HC8S0050
HC 8 100	115	5	HC8S0100
HC 8 200	215	5	HC8S0200
HC 8 300	310	5	HC8S0300
HC 8 600	600	5	HC8S0600
HC 8 600 4MW	600	5	HC8S0600P
HC 8 1000	1000	5	HC8S1000
HC 8 2000	1710	5	HC8S2000
HC 8 3000	3550	5	HC8S3000
HC 8 5000	4950	5	HC8S5000



High Pressure Version	Vessel Volume [L]	Working pressure max. [bar]	Pressurisation Automat Order no.
HC 8 200 HD	215	9,2	HC8S0200HD
HC 8 300 HD	310	9,2	HC8S0300HD
HC 8 600 HD	600	9,2	HC8S0600HD
HC 8 1000 HD	1000	9,2	HC8S1000HD
HC 8 2000 HD	1710	9,2	HC8S2000HD
HC 8 3000 HD	3550	9,2	HC8S3000HD
HC 8 5000 HD	4950	9,2	HC8S5000HD

Auxiliary vessels for volume extension	
connection fitting for auxiliary vessel	HZ605152
Additional Expansion Vessel EB8S Size: 215 Litres	EB8S200
Additional Expansion Vessel EB8S Size: 310 Litres	EB8S300
Additional Expansion Vessel EB8S Size: 600 Litres	EB8S600
Additional Expansion Vessel EB8S Size: 1000 Litres	EB8S1000
Additional Expansion Vessel EB8S Size: 1710 Litres	EB8S2000
Additional Expansion Vessel EB8S Size: 3550 Litres	EB8S3000
Additional Expansion Vessel EB8S Size: 4950 Litres	EB8S5000



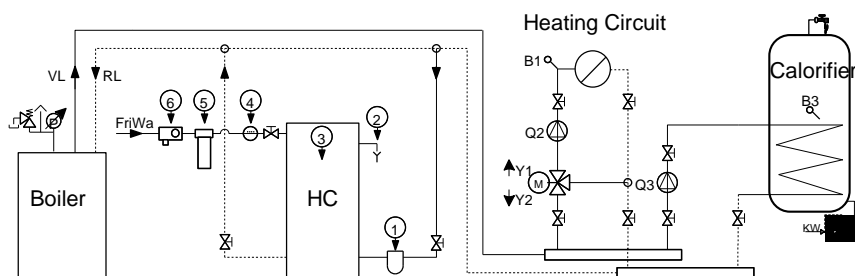
Fig.: EB 200








# Pressurisation Automat Accessories

RG 65

## Component overview

- 1 Dirt filter kit
- 2 Tundish
- 3 Disinfection LED Set
- 4 Water meter
- 5 Softener station
- 6 Safety fitting group



	Tundish DN50 according to DVGW	HZ605160
	Tubing with pump from replenishment tank to HC	HZ605178
	refrigerant tubing for HC 50-100 with stainless steel hoses	HZ603041
	refrigerant tubing for HC 200-300 with stainless steel hoses	HZ603042
	refrigerant tubing for HC 600-5000 with stainless steel hoses	HZ603044
	optional mechanical overpressure kit 1" (HC 200-300)	HZ603030
	optional mechanical overpressure kit 6/4" (HC 600-5000)	HZ603031
	optional minimum pressure switch	HZ603040
	option for second pressure pump (HC 600 - HC 5000)	HZ603055
	option for second high pressure HD pump (HC 200 - HC 5000)	HZ603056
	water meter with pulse output for all HC included in HC200-HC5000	OZ700340
	dirt filter kit stainless steel filter cartridge 0.05mm, 2 manometer, fill and drain valve, filter key 1" for HC 50-200	HZ605190
	1 1/2" for HC 300	HZ605191
	2" for HC 600-3000	HZ605192
<b>For highly polluted system-water (especially old heating systems) a dirt filter has to be installed in the HC-flow.</b>		
	The Olymp heating softener station for hardness/salt reducing (ion exchange principle) as well as filling/refilling of the heating system with treated water. Consisting of: manual water meter, blending device and shut-off ball valve. Pre-pressure: max. 4 bar.	HZ605300
	The Olymp salt reducing cartridge has to be mounted into the heating softener station.	HZ605310
	Safety fitting group Incl. filling block, system separator, pressure reducer, shut-off ball valve, reduced pressure zone valve.	HZ605305
	Container disinfection LED Set Existing connection kit and LED lights disinfection	HZ605315
	Option with additional vessel kit for peak compensation in low volume systems	HZ603051
	Prewired connections for a building management system. Error groups and remote reset connected with relays to potential-free contacts	HZ605162
	Maintenance shut off valve set 3/4" HC50/100 + 1/2" valve refill	HZ605163
	Maintenance shut off valve set 1" HC200/600 + 1/2" valve refill	HZ605164
	Maintenance shut off valve set 1" HC1000/5000 + 3/4" valve refill	HZ605165

# Pressurisation Automat Table, technical Data

Type	Order no.	Vessel vol.	Working press. max.	Stat. height max.	weight	width	depth	height	Max.	Connection
		[l]	[bar]	[m]	[kg]	[mm]	[mm]	[mm]	kW	tube
HC 7 E(HD)	HC8SE(HD)	60	5 (9,2)	45 (87)	55	500	880	1030	-	3/4"
HC 7 N	HC7N	20	4		22	560	300	650		1/2"
HC 7 N Duo	HC7ND	20	4		25	560	300	650		1/2"
HC 8 50 LP	HC8S0050	60	2	15	52	500	880	1030	100	3/4"
HC 8 50	HC8S0050	60	4 (2)	35	52	500	880	1030	500	3/4"
HC 8 100	HC8S0100	115	4,5	40	60	500	880	1130	500	3/4"
HC 8 200	HC7S0200	215	5	45	95	800	1200	1235	2200	1"
HC 8 300	HC7S0300	310	5	45	110	800	1200	1355	2200	6/4"
HC 8 600	HC7S0600	600	5	45	120	800	1200	1845	2200	6/4"
HC 8 600 4MMV	HC7S0600P	600	5	45	125	800	1200	1845	4000	2"
HC 8 1000	HC7S1000	1000	5	45	250	1000	1400	1830	4000	2"
HC 8 2000	HC7S2000	1710	5	45	350	1300	1700	2060	4000	2"
HC 8 3000	HC7S3000	3550	5	45	450	2300	2600	1645	4000	2"
HC 8 5000	HC7S5000	4950	5	45	550	2300	2600	1955	4000	2"
HC 8 100 HD	HC7S100HD	115	5	45	65	800	1200	1235	4000	2"
HC 8 200 HD	HC7S0200HD	215	9,2	87	100	800	1200	1355	4000	1"
HC 8 300 HD	HC7S0300HD	310	9,2	87	110	800	1200	1845	4000	6/4"
HC 8 600 HD	HC7S0600HD	600	9,2	87	155	800	1200	1845	4000	2"
HC 8 1000 HD	HC7S1000HD	1000	9,2	87	250	1000	1400	1830	4000	2"
HC 8 2000 HD	HC7S2000HD	1710	9,2	87	350	1300	1700	2060	4000	2"
HC 8 3000 HD	HC7S3000HD	3550	9,2	87	450	2300	2600	1645	4000	2"
EB 200	EB8S0200	215			50	800	900	1235		
EB 300	EB8S0300	310			85	800	900	1355		
EB 600	EB8S0600	600			90	800	900	1845		
EB 1000	EB8S1000	1000			120	800	900	1845		
EB 2000	EB8S2000	1710			270	1000	1100	1830		
EB 3000	EB8S3000	3550			390	1300	1400	2060		
EB 5000	EB8S5000	4950			490	2300	2300	1955		

# Membrane Auxiliary Vessels

## Cap valves, Safety fitting valve

RG 65

Membrane auxiliary vessels for isolated heating-, solar- and cooling systems. Permission pursuant to EU pressure device guideline 97/23EG and membrane to DIN 4807/3, max. operating temperature: 120°C (393K).  
The membrane operating temperature should be never higher than 70°C (343K). At higher temperatures we highly recommend sanctions for temperature reduction.  
Capable for antifreeze based on glycol, up to a 50% mix ratio.



Litre	Pressure max	Pre-pressure	Connection	Weight	Dimensions [mm]		Order no.
					diameter	height	
12	3	1,5	3/4"	2,7	286	336	OEGC012
18	3	1,5	3/4"	3,7	328	328	OEGC018
25	3	1,5	3/4"	4,5	358	380	OEGC025
50	6	1,5	3/4"	11,2	437	495	OEGC050
80	6	1,5	1"	15,0	519	551	OEGC080
100	6	2,5	1"	23,8	484	780	OEGC100
150	6	2,5	1"	27,6	484	1024	OEGC150
200	6	2,5	1"	38,1	484	1300	OEGC200
250	6	2,5	1"	51,7	600	1153	OEGC250
300	6	2,5	1"	56,9	600	1335	OEGC300
400	6	2,5	1"	76,4	790	1180	OEGC400
500	6	2,5	1"	83,7	790	1330	OEGC500
600	6	2,5	1"	92,9	790	1538	OEGC600
800	6	2,5	1"	126,9	790	1888	OEGC800

### Cap valves for Auxiliary Expansion Vessels

connection	dimension	Order no. Price
3/4"	3/4"	OEGK3
1"	1"	OEGK4

### Safety fitting valve - brass

	3 bar	4 bar	5 bar	6 bar	7 bar	8 bar	9 bar	10 bar
1/2"	OMSV00530	OMSV00540	OMSV00550	OMSV00560	OMSV00570	OMSV00580	OMSV00590	OMSV00510
3/4"	OMSV00730	OMSV00740	OMSV00750	OMSV00760	OMSV00770	OMSV00780	OMSV00790	OMSV00710
1"	OMSV01030	OMSV01040	OMSV01050	OMSV01060	OMSV01070	OMSV01080	OMSV01090	OMSV01010
1 1/4"	OMSV01230	OMSV01240	OMSV01250	OMSV01260	OMSV01270	OMSV01280	OMSV01290	OMSV01210
1 1/2"	OMSV01530	OMSV01540	OMSV01550	OMSV01560	OMSV01570	OMSV01580	OMSV01590	OMSV01510
2"	OMSV02030	OMSV02040	OMSV02050	OMSV02060	OMSV02070	OMSV02080	OMSV02090	OMSV02010